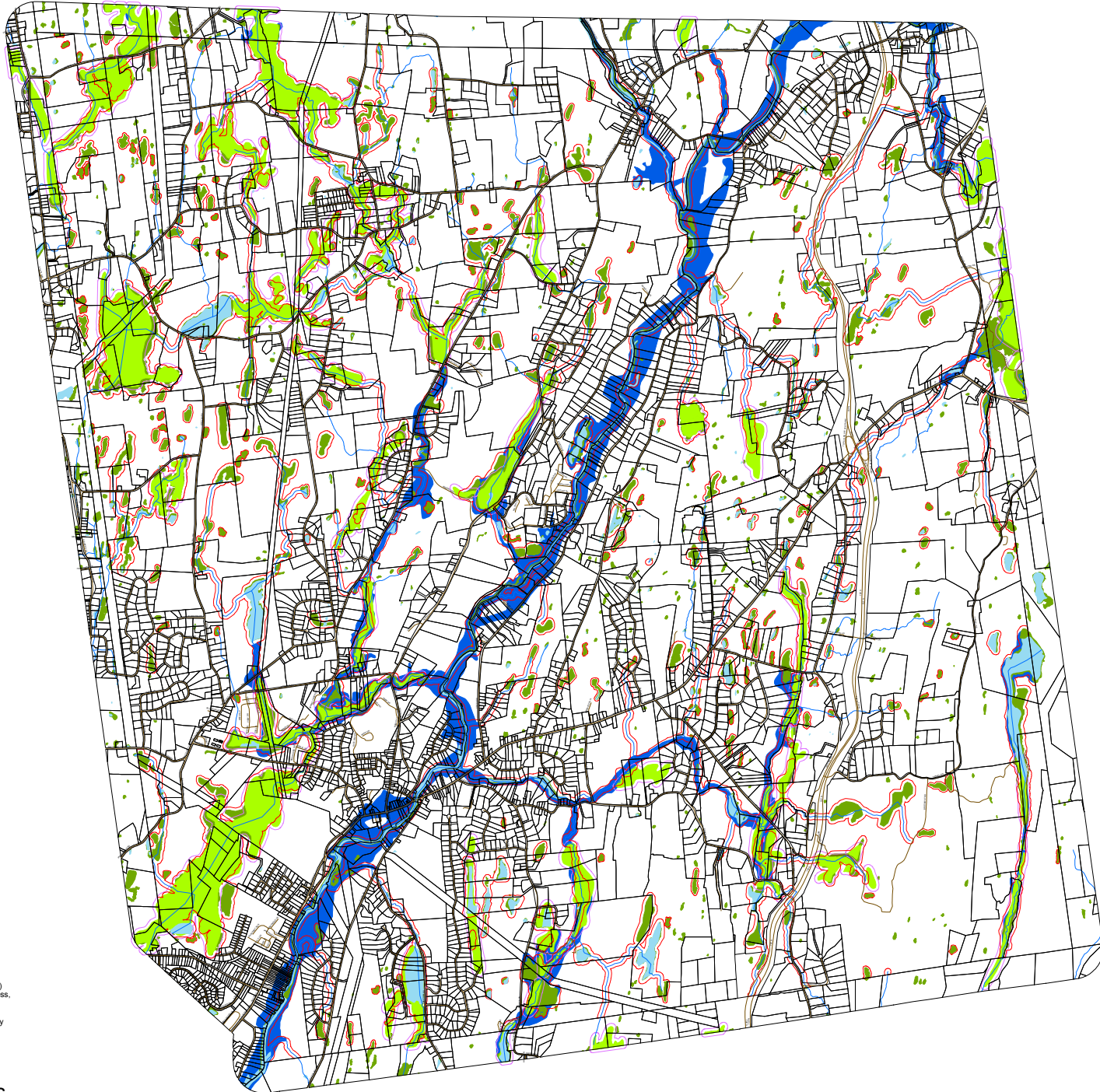












Water Resources Pleasant Valley, NY



Legend

-  Parcels
-  Roads
-  Streams
-  Water Bodies
-  PV Ordinance Buffers
-  DEC Wetlands
-  DEC Wetlands 100 ft. Buffers
-  NWI Wetlands
-  100YR Floodplains FEMA

Prepared by T. Southworth
February 1, 2009

Data Sources

Tax Parcels: Originated and maintained by Dutchess County Real Property Tax Service, January 2009.
Roads: Edited and maintained by Dutchess County Real Property Tax Service, 2008.
Municipal Boundaries: Originated and maintained by Dutchess County Real Property Tax Service, July 2008. With a 1000 foot boundary around town line.
Surface Water Bodies and Streams: National Hydrography Dataset (NHD) High Resolution, 2005.
State Regulated Wetlands: This layer represents wetlands regulated by the New York State Department of Environmental Conservation. The data is based on official New York State Freshwater Wetlands Maps as described in Article 24-0301 of the Environmental Conservation Law. These data are not a legal substitute for the official maps 1999.
National Wetlands Inventory: NWI digital data files are records of wetlands locations and classifications as defined by the U.S. Fish and Wildlife Service, 2007.
Pleasant Valley Wetlands, Waterbody and Watercourse Protection, Town Code, Chapter 53. Adopted by the Town of Pleasant Valley, 2002.
Projection: State Plane, New York East, FIPS Zone 3101, Datum NAD83.
Note: The information in this document is furnished by the Pleasant Valley Conservation Advisory Council (CAC) as a public service. The CAC makes no warranties, expressed or implied, concerning the accuracy, completeness, reliability, or suitability for the use of this information. Furthermore the CAC assumes no liability associated with the use or misuse of such information. All information should be verified in the field by appropriate individuals. Please be reminded that features on this map are for visual display only. The actual location of features can vary from 10 -100 feet from the position shown on the map.

