

TOWN OF PLEASANT VALLEY

OPEN SPACE AND FARMLAND PLAN



TOWN OF PLEASANT VALLEY

OPEN SPACE AND FARMLAND PLAN

STAKEHOLDER MEETINGS

Friday April 26, 2013, 7:00 PM to 9:00 PM

Saturday May 4, 2013, 10:00 AM to 12:00PM



PROJECT TEAM

Town of Pleasant Valley
Open Space Committee

Sandra Larkin, Teddi Southworth, Rebecca Seaman
Ross Hartlipp and Meta Plotnik
with Don Sagliano (as Town Board liaison)

AKRF, Inc.

Nina S. Peek, AICP, Senior Technical Director

Taconic Site Design &
Landscape Architecture

Peter Karis, RLA, Principal Landscape Architect



OPEN PROCESS

The Project Team is dedicated to an open planning process, inviting input from stakeholders and the community.

How are we doing this?

Stakeholder Meeting Sessions (to gather direct input)

On-line Community Survey (goes live May 6, 2013)

Public Information Meeting (early summer)



DEFINITION OF OPEN SPACE

Land with minimum or no development, the protection of which would conserve important natural resources, farmland, cultural resources, wildlife habitat, and recreational uses, resulting in the creation of conservation development patterns that provide fiscal and economic benefits to our community.



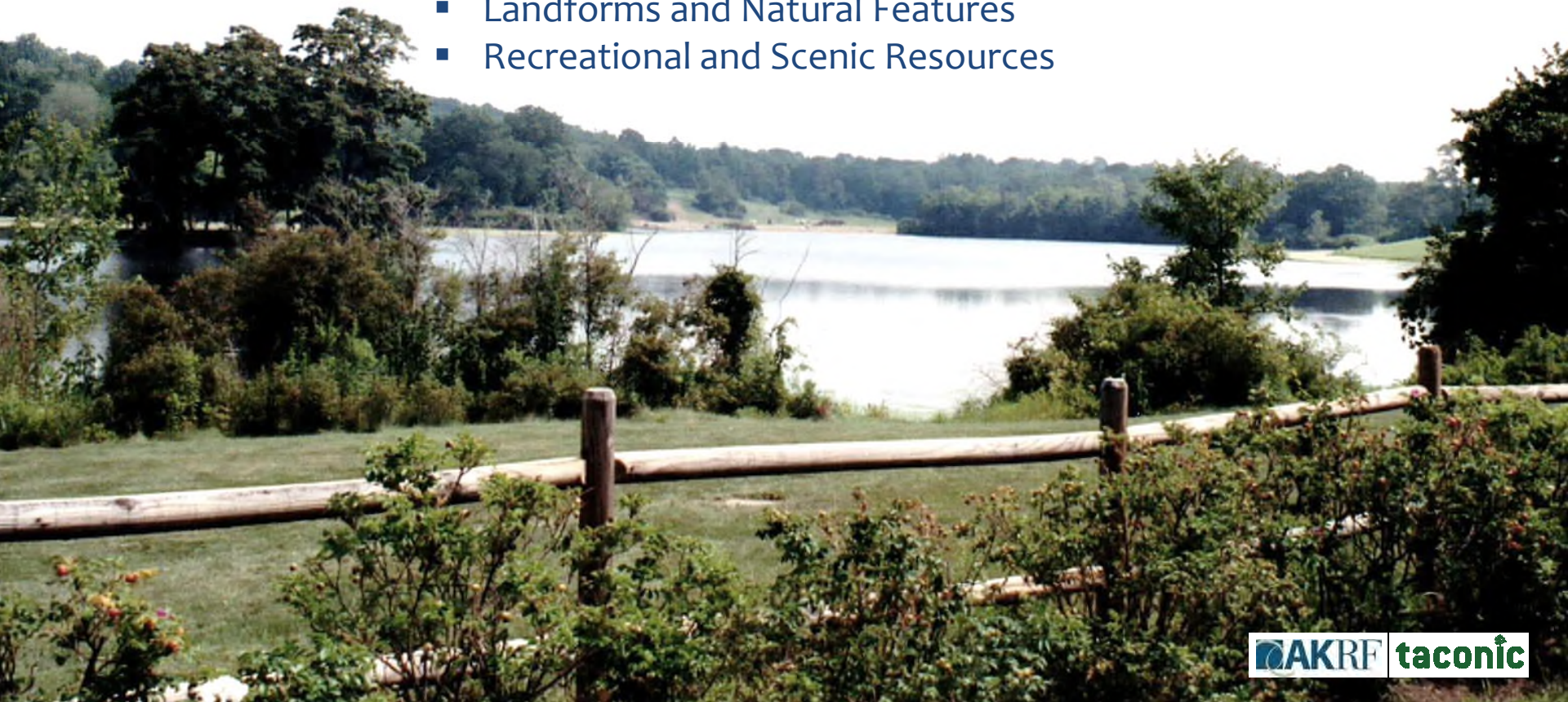
WHY PREPARE AN OPEN SPACE AND FARMLAND PLAN?

- ❑ Proactive, integrated planning to anticipate and respond to pressure for development.
- ❑ Inventory and coordinate resources to avoid fragmentation.
- ❑ Recognize the substantial economic benefit of active and productive agriculture and farms.
- ❑ Identify and provide support and incentives to protect farmland, natural habitat and open space.
- ❑ Protect the rural character of Pleasant Valley and maintain quality of life for residents.



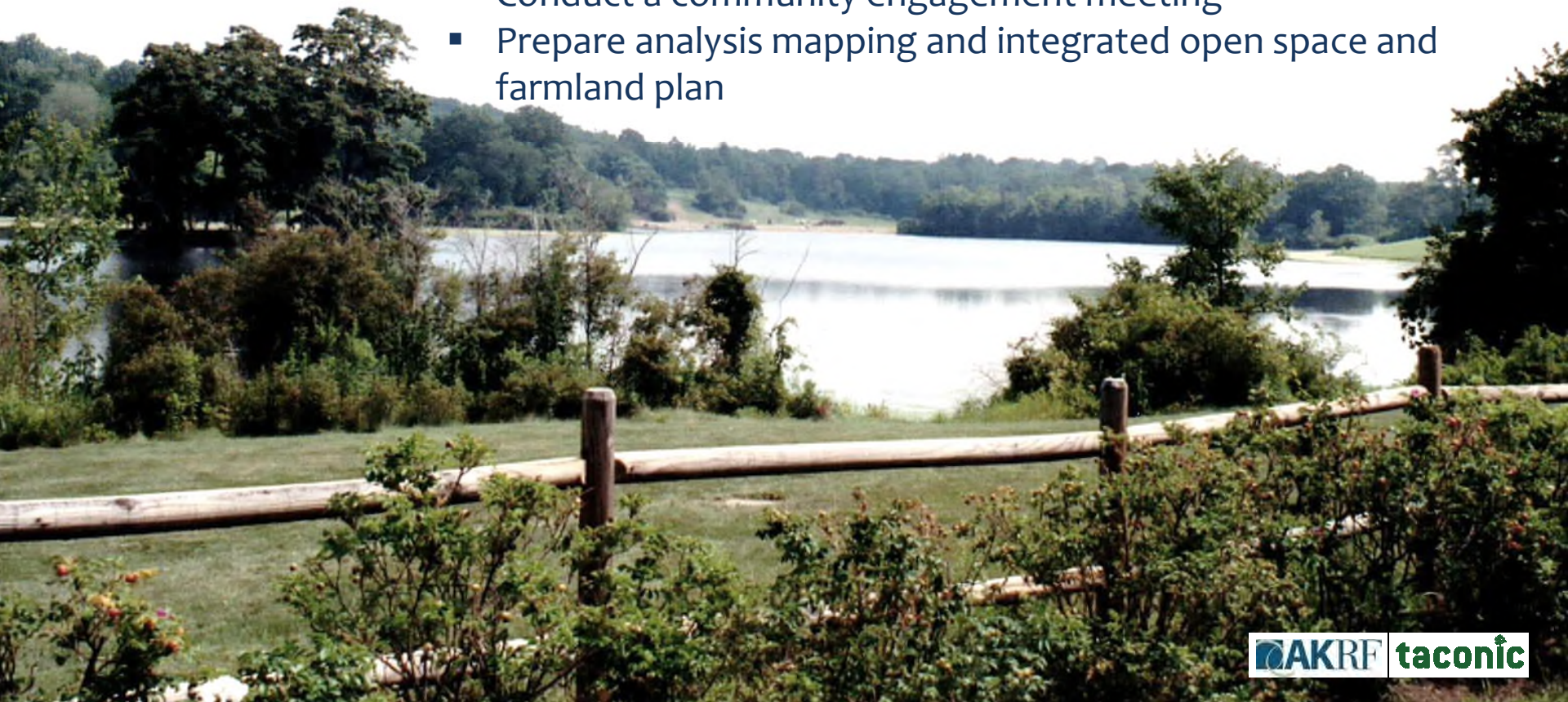
PROJECT GOALS AND OBJECTIVES

- ❑ Preserve and protect the open space and farmland in Pleasant Valley to enhance the quality of life for our residents and preserve the rural character of the community.
 - Existing Conservation Areas
 - Water Resources
 - Farms and Agricultural Landscapes
 - Protect Natural Habitat and Ecological Communities
 - Landforms and Natural Features
 - Recreational and Scenic Resources



PROJECT TASKS

- Conduct visioning session and monthly meetings with Open Space Committee
- Engage in site visits
- Inventory and prepare resource mapping
- Engage stakeholders in roundtable discussions
- Conduct on-line survey
- Analyze and develop action plan based on input
- Conduct a community engagement meeting
- Prepare analysis mapping and integrated open space and farmland plan



PROJECT SCHEDULE

Project Kickoff

November 19, 2013

Team Meetings

January 17, February 27,
March 28, April 25

Data Collection and Mapping

On-Going

Stakeholder/Roundtable Discussions

April 26 and May 4

On-line Survey goes LIVE

May 6

Team Meeting

May , June (TBD)

Community Engagement Meeting

June (TBD)

Prepare Final Plan

July (TBD)



STAKEHOLDER MEETING AGENDA

Introductions and Presentation (15 minutes)

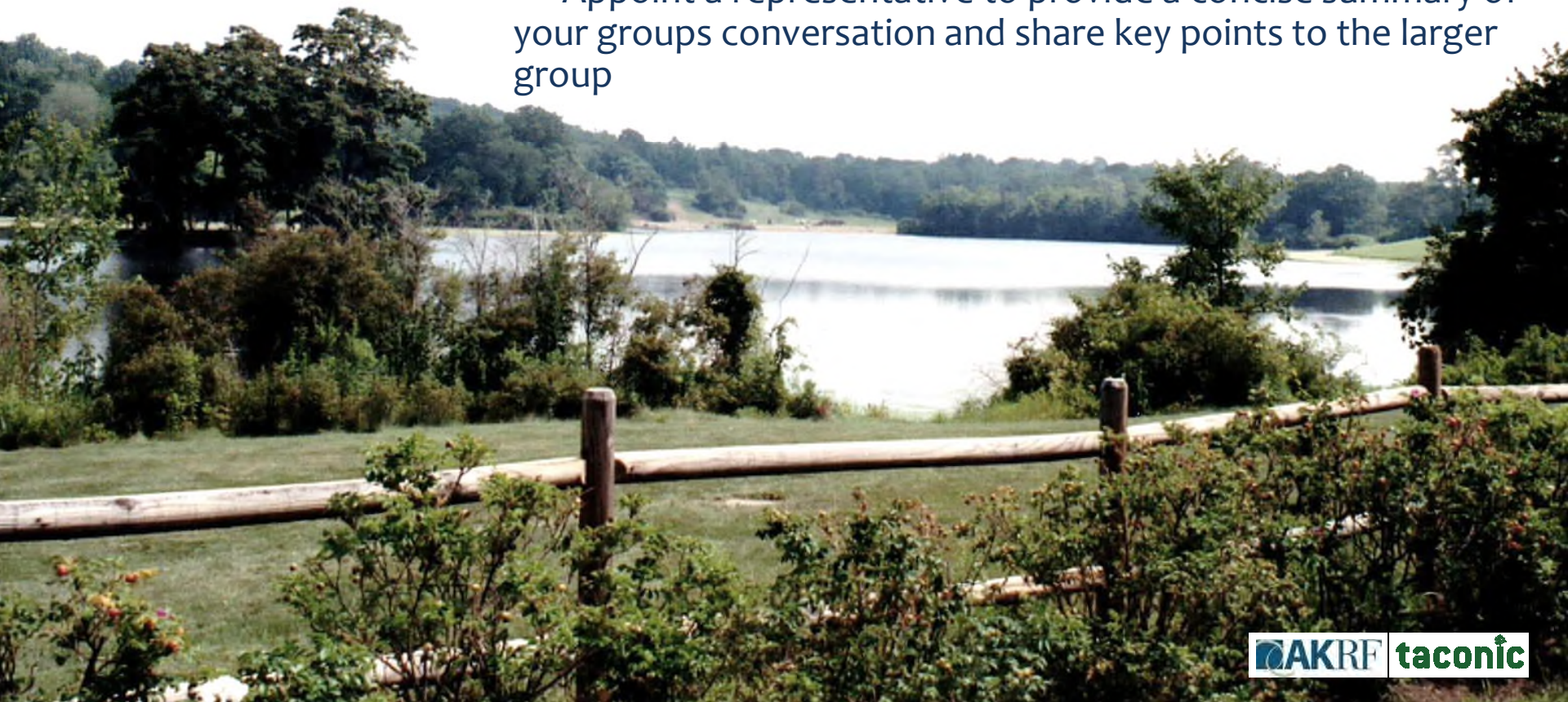
Roundtable Discussions (30 minutes)

Roundtable Summary (20 minutes)



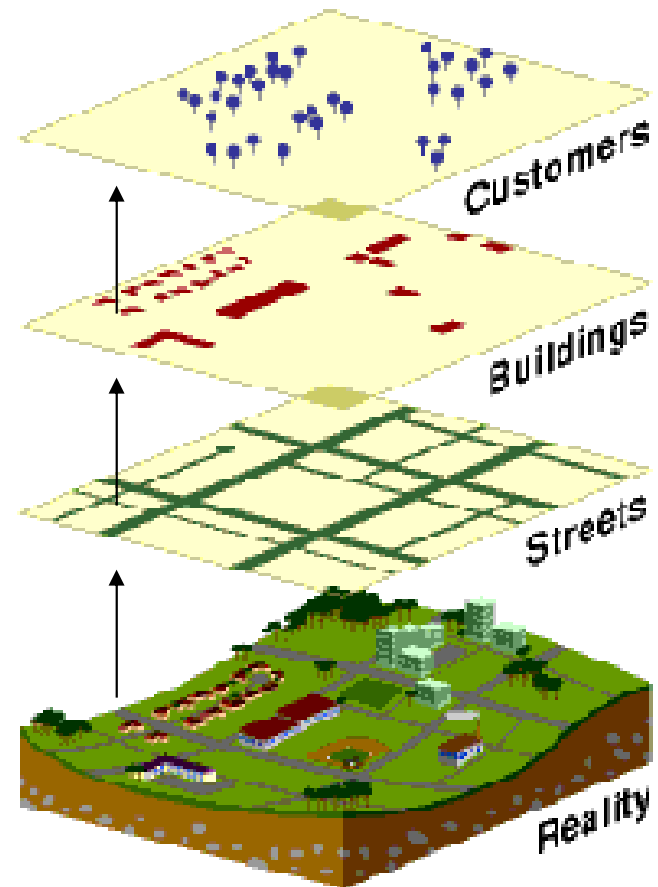
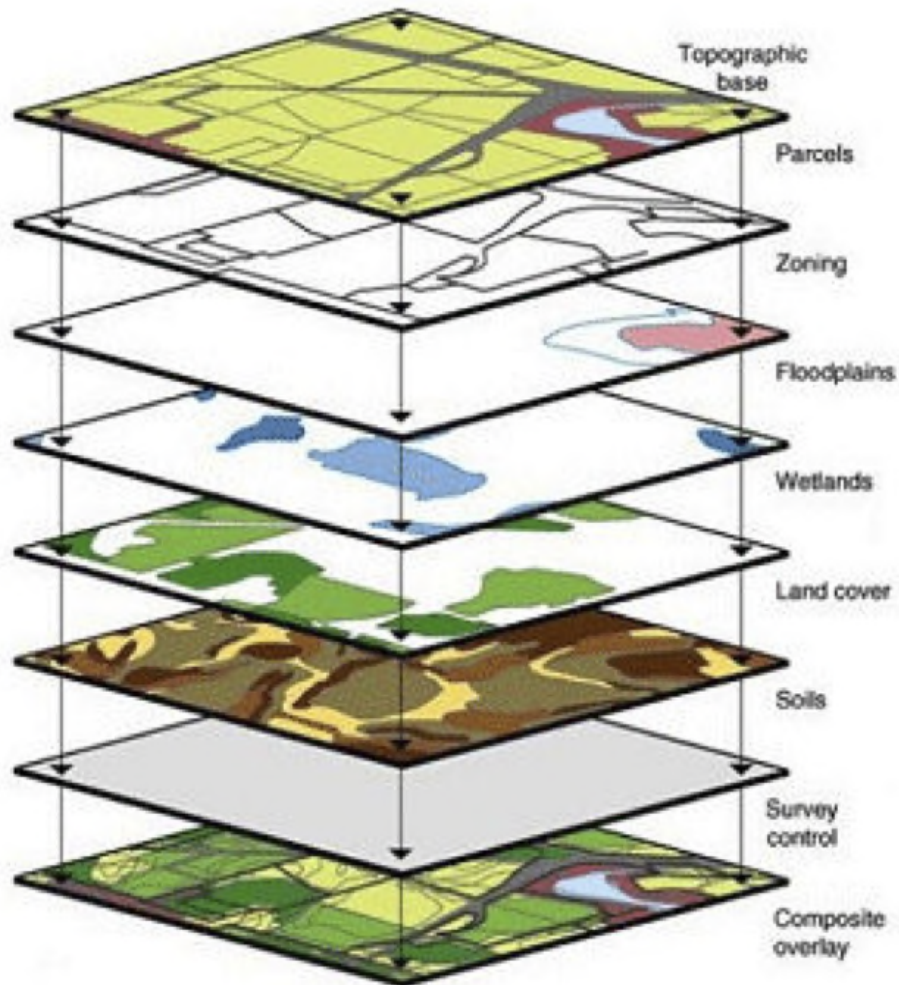
GROUND RULES

- Limited time – spend no more than 10 minutes on each topic
- Every opinion is valid and everyone is encouraged to provide input.
- Keep the discussion moving - don't get hung up on points of disagreement
- Try to suggest solutions as well as issues
- Appoint a representative to provide a concise summary of your groups conversation and share key points to the larger group

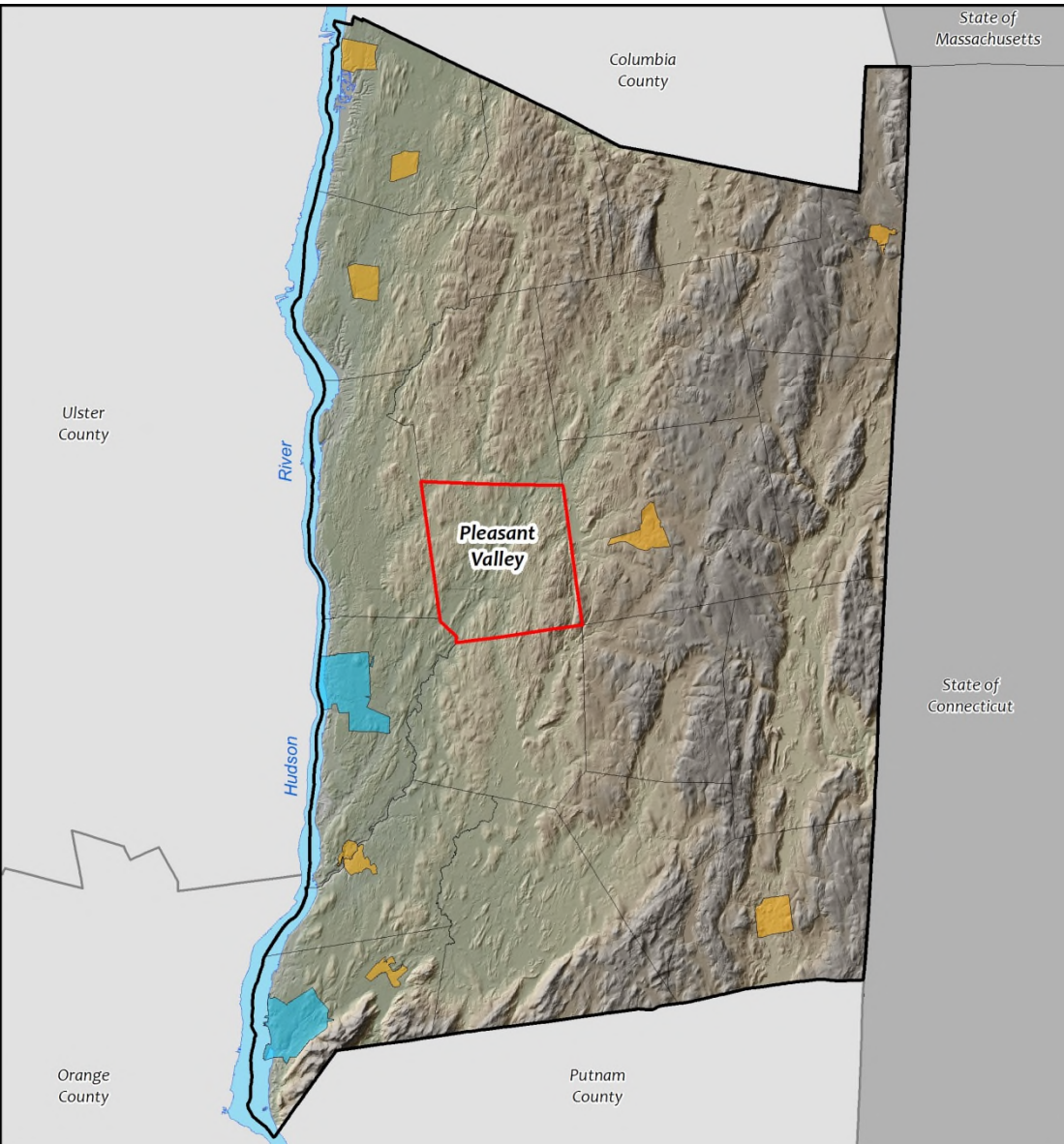


RESOURCE INVENTORY

What are we looking at?



Dutchess County Terrain Map



Legend

- Town of Pleasant Valley
- Dutchess County
- Town Boundary
- City
- Village
- Hudson River
- NYS Counties
- US States

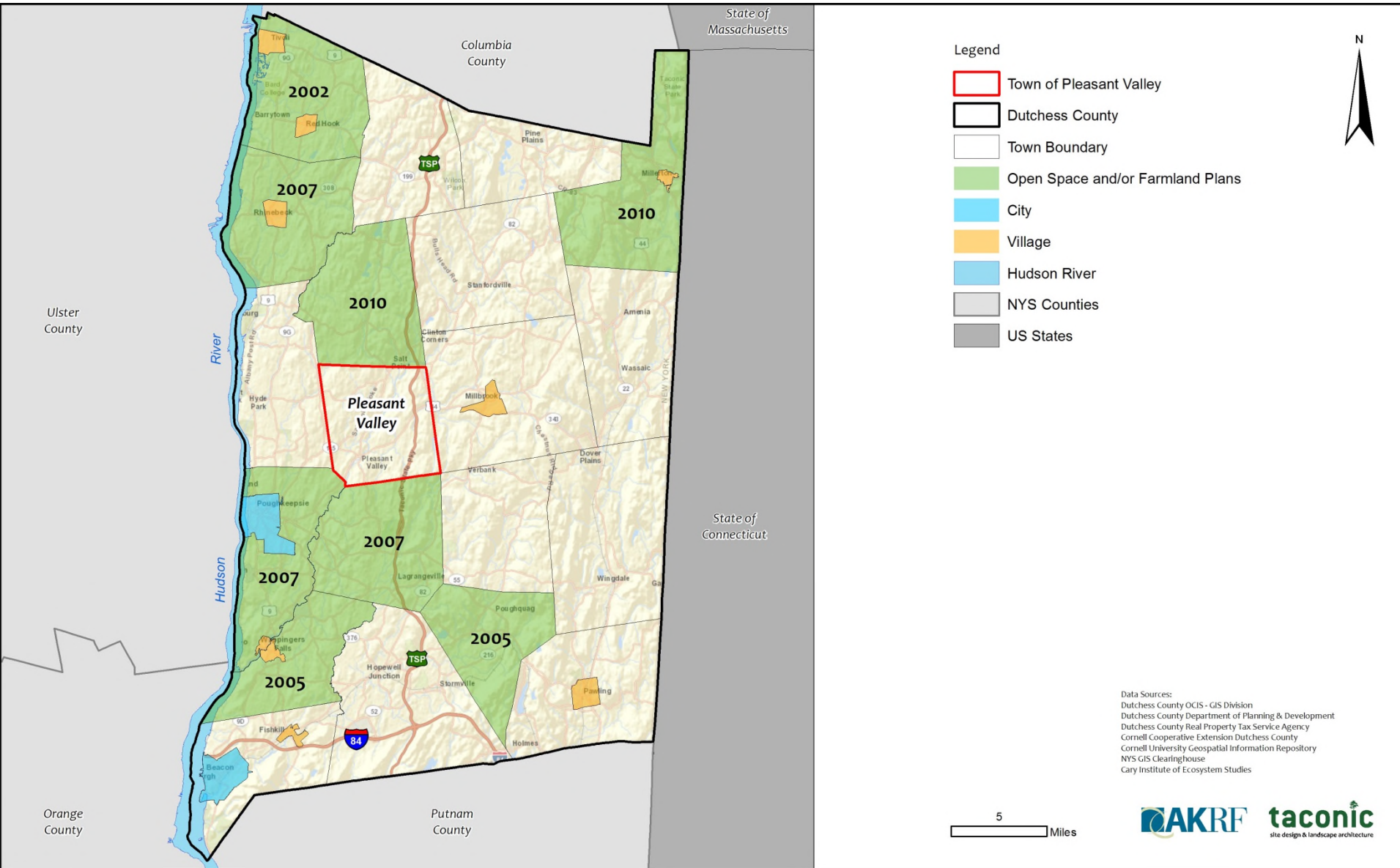


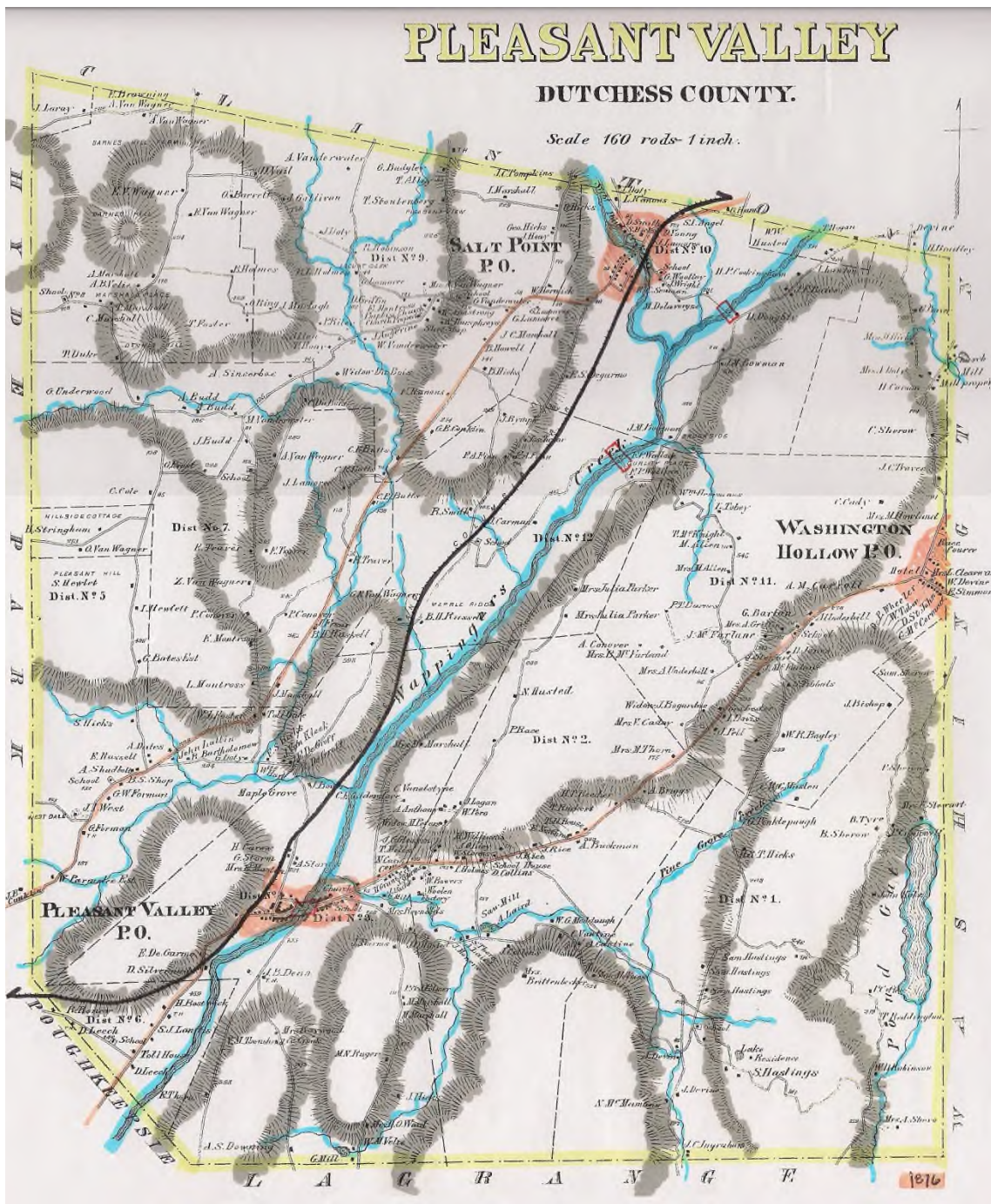
Data Sources:
Dutchess County OCIS - GIS Division
Dutchess County Department of Planning & Development
Dutchess County Real Property Tax Service Agency
Cornell Cooperative Extension Dutchess County
Cornell University Geospatial Information Repository
NYS GIS Clearinghouse
Gary Institute of Ecosystem Studies

5 Miles



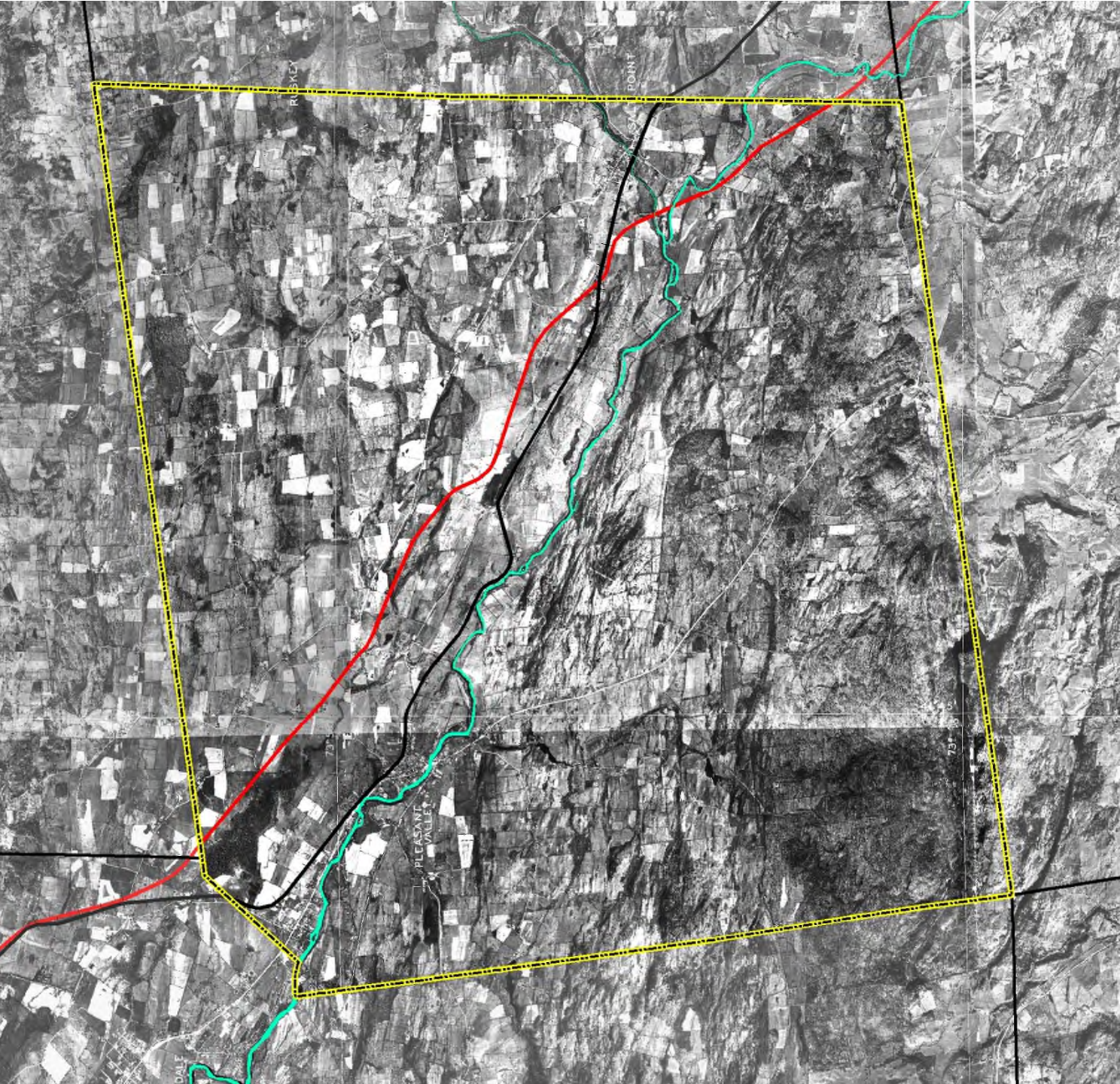
Dutchess County Towns with Open Space and/or Farmland Plans





Pleasant Valley

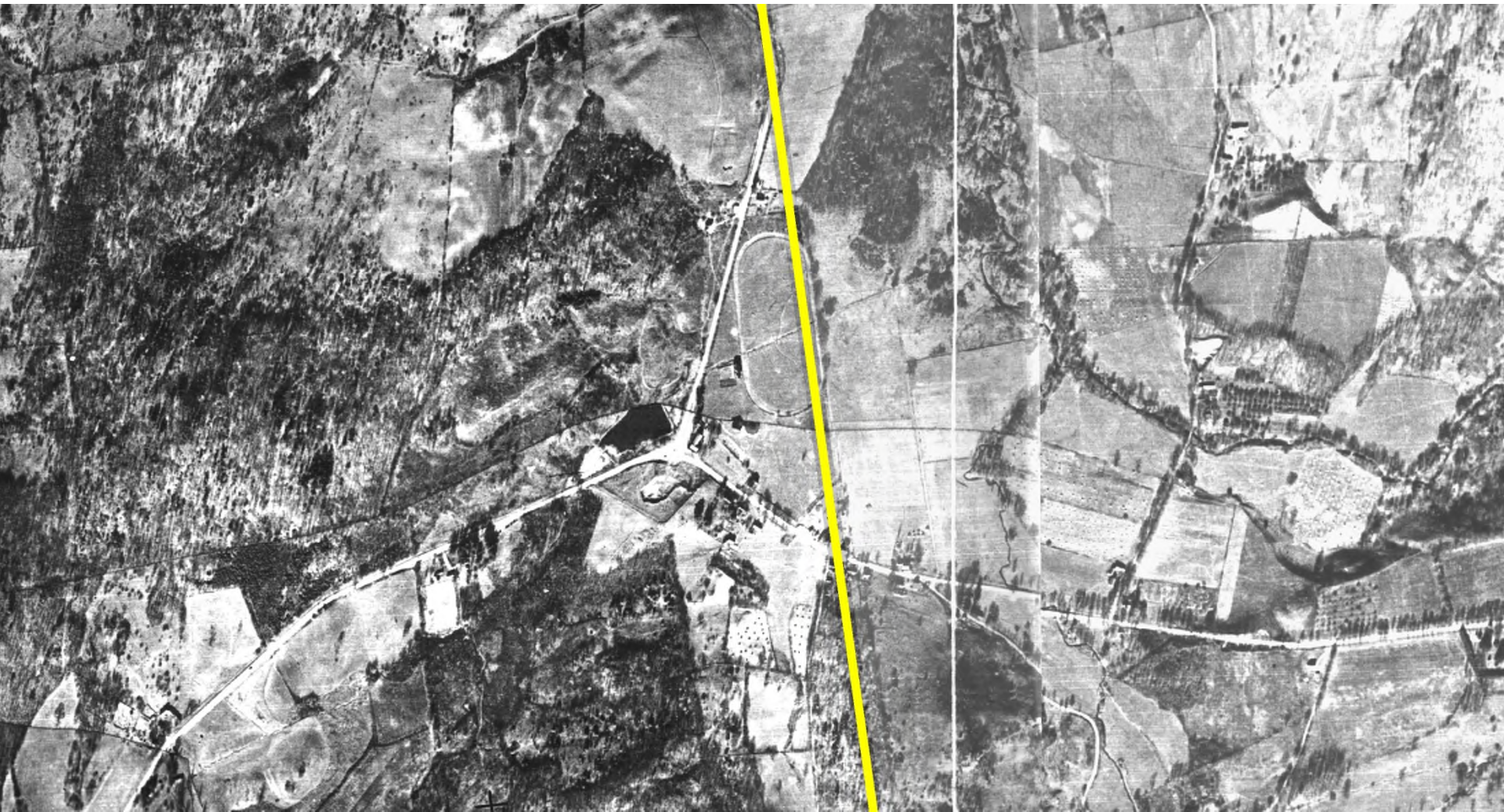
(1936)



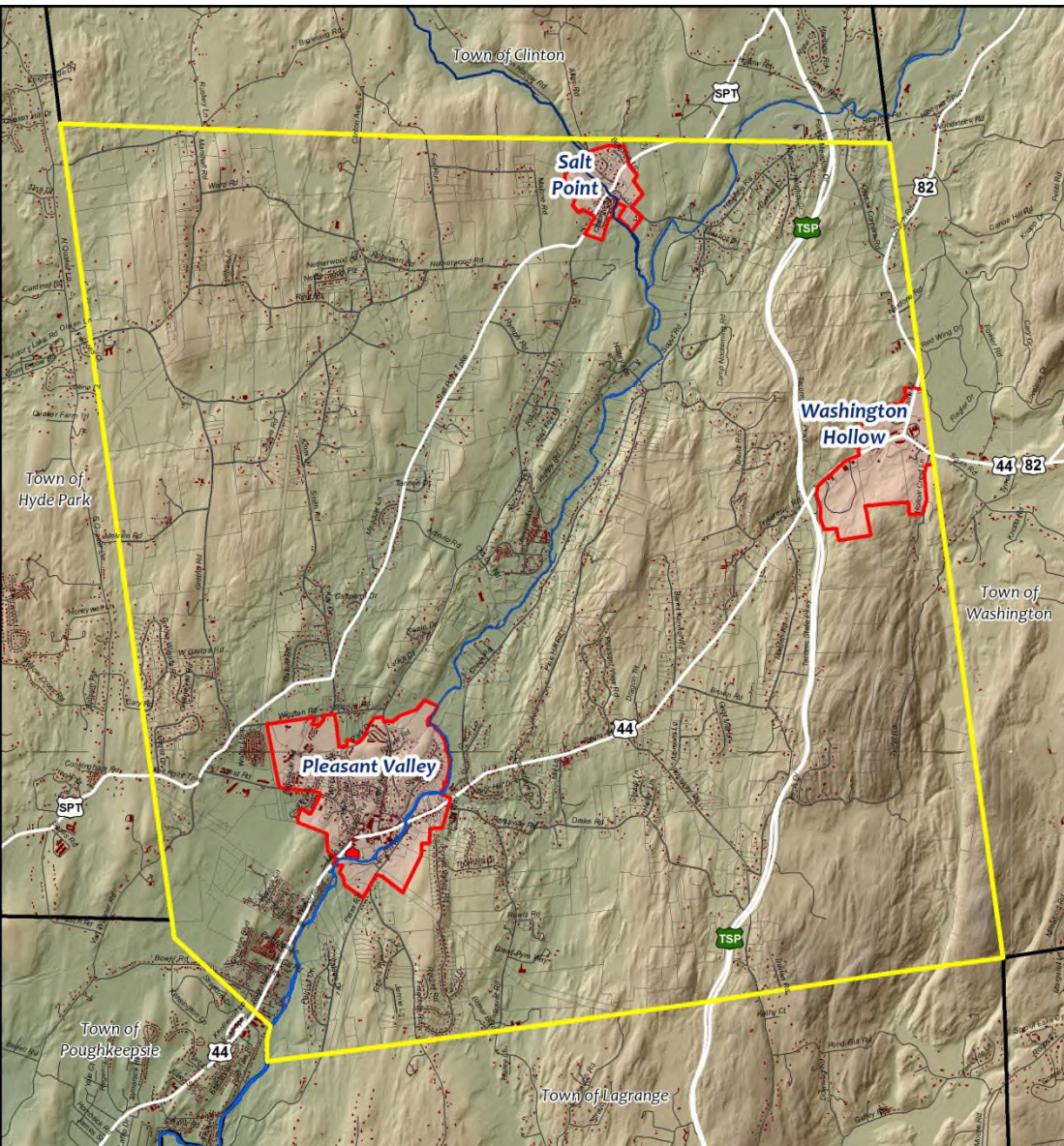




Washington Hollow Hamlet (1936)



Pleasant Valley (2012)



Legend

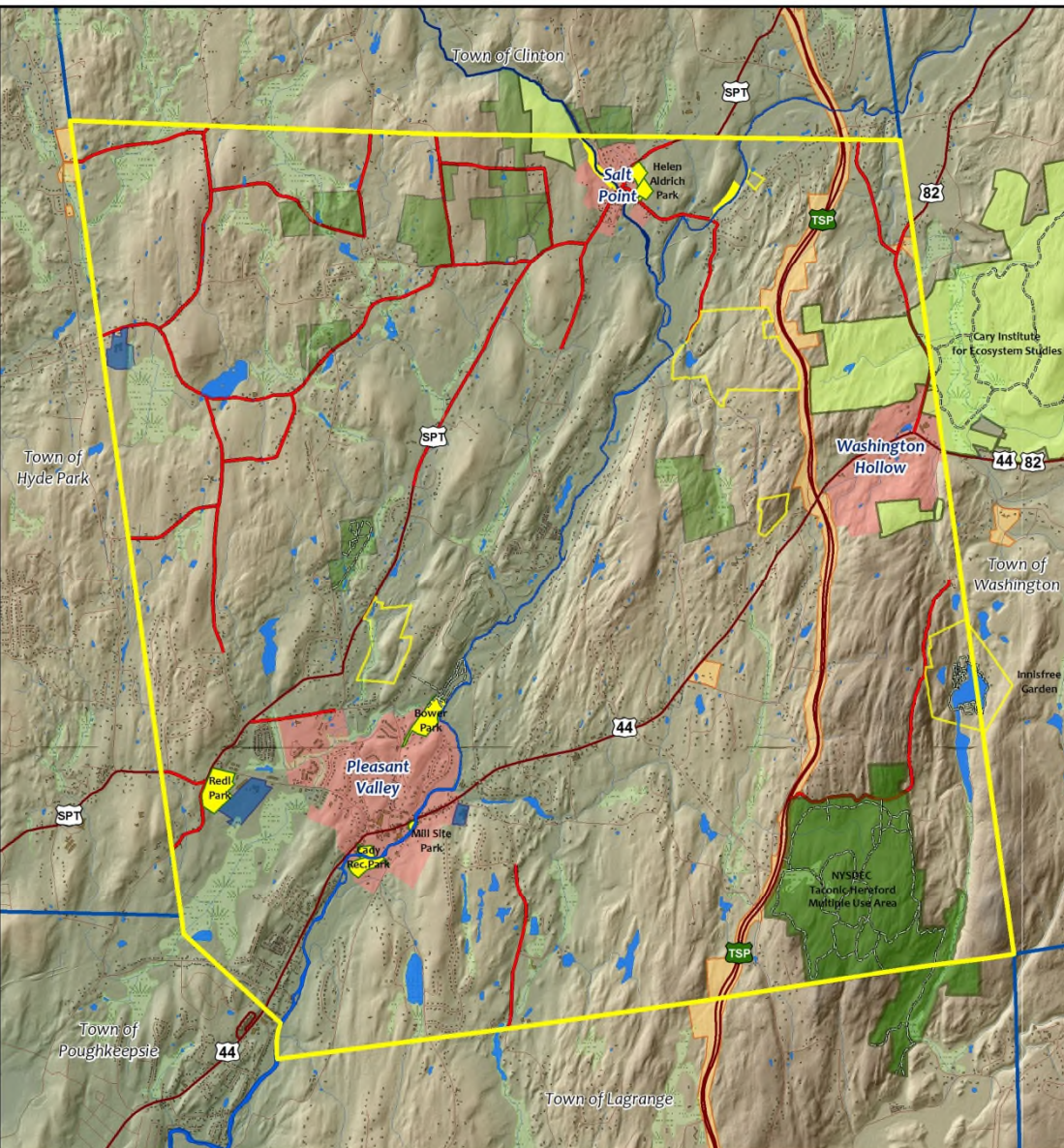
- Pleasant Valley Boundary
- Hamlets
- ▲ Pleasant Valley Town Hall
- Wappingers Creek
- Little Wappingers Creek
- State Highways
- Roads
- Existing Structures
- Other Municipal Boundaries



Data Sources:
 Dutchess County OCIS - GIS Division
 Dutchess County Department of Planning & Development
 Dutchess County Real Property Tax Service Agency
 Cornell Cooperative Extension Dutchess County
 Cornell University Geospatial Information Repository
 NYS GIS Clearinghouse
 Cary Institute of Ecosystem Studies

1
 Miles





- Legend
- Pleasant Valley Boundary
 - Wappingers Creek
 - Little Wappingers Creek
 - Trails (Open to Public)
 - Water Body
 - Streams
 - NYDEC Wetland
 - Town Parks
 - Taconic Hereford Multiple Use Area (NYSDEC)
 - Public School
 - Other Town Owned Parcels
 - Private Recreation Facilities
 - Lands of Cary Institute of Ecosystem Studies
 - Conservation Easements (DLC)
 - Scenic Roads
 - State Highways
 - Roads
 - Structures
 - Sites with Historic Status
 - Other Municipal Boundaries
 - Hamlets

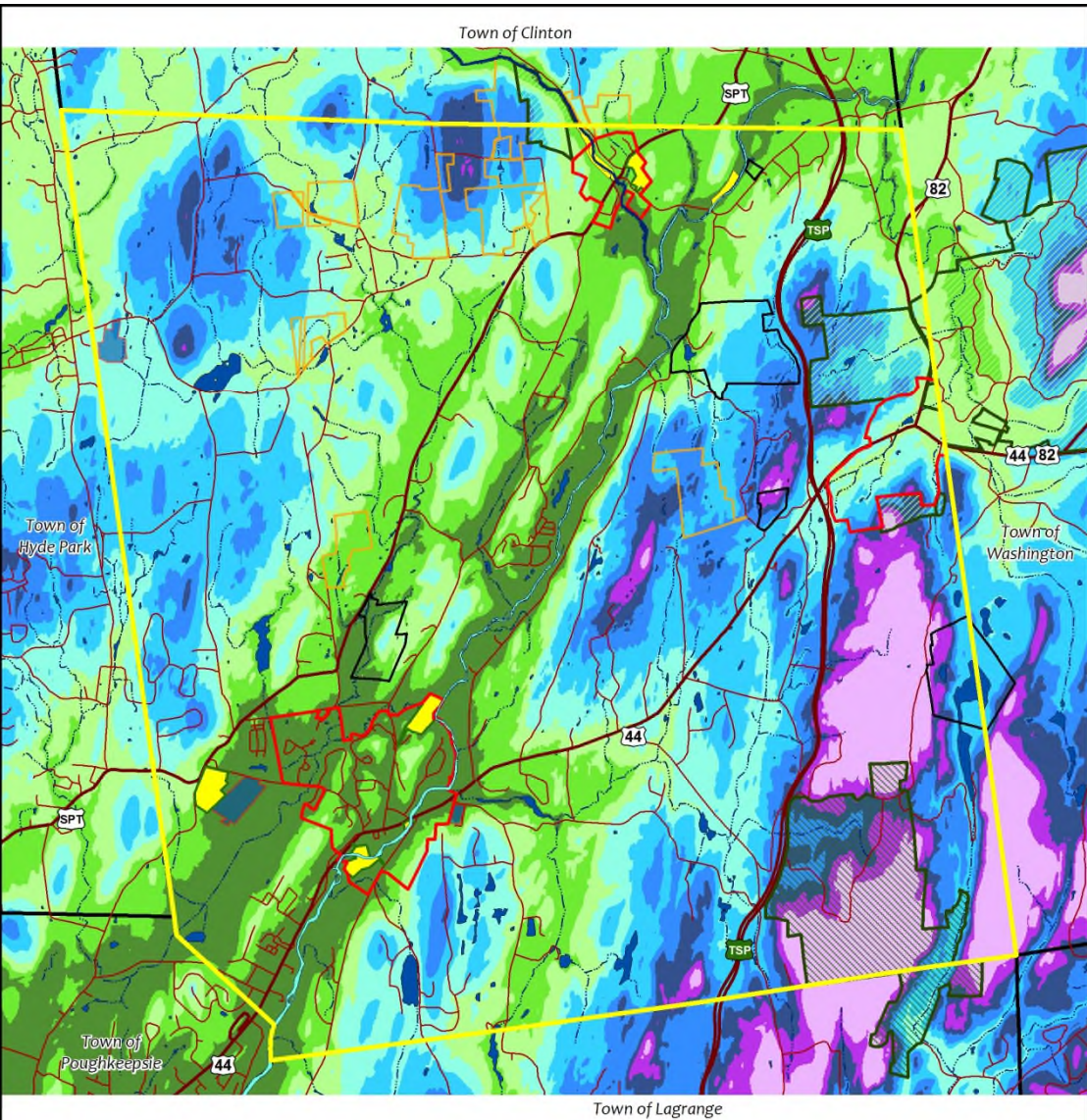
1 Miles



EXISTING OPEN SPACE CONDITIONS MAP

Town of Pleasant Valley
Open Space and Farmland Plan
April 2013

Data Sources:
Dutchess County GIS - GIS Division
Dutchess County Department of Planning & Development
Dutchess County Real Property Tax Service Agency
Generalized Land Use Information for Dutchess County
NY State Clearinghouse
Cary Institute of Ecosystem Studies



Legend

- Pleasant Valley Boundary
- Wappingers Creek
- Little Wappingers Creek
- Hamlets
- Town Parks
- Other Town Owned Parcels
- New York State MUA
- Public School
- Private Recreation Facilities
- Lands of Cary Institute of Ecosystem Studies
- Conservation Properties (DLC)
- State Highways
- Roads
- Water Body
- Streams
- Taconic Hereford Multiple Use Area (NYSDEC)
- Lands of Cary Institute of Ecosystem Studies
- Other Municipal Boundaries

Elevation

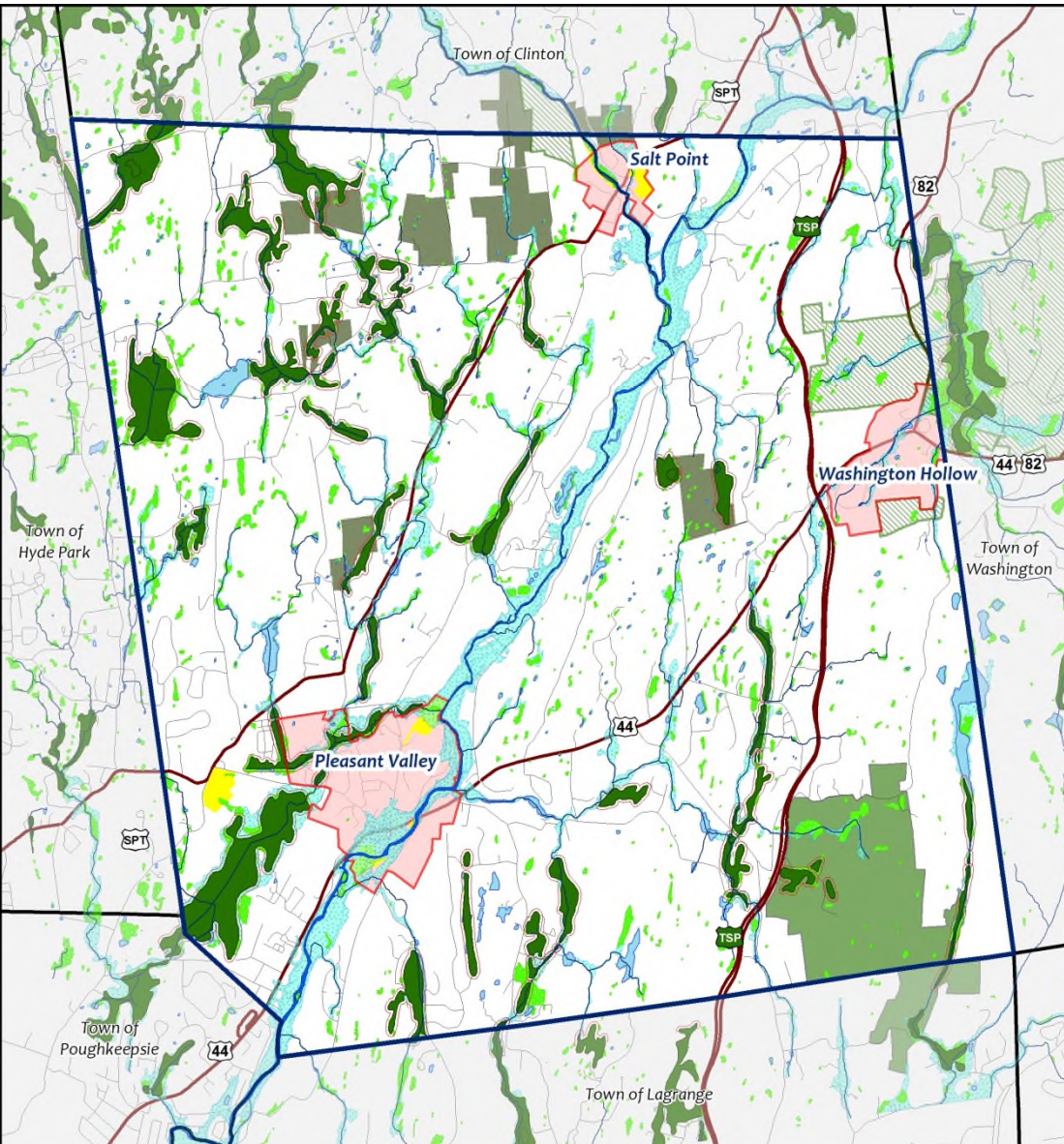
<VALUE>

- < 250
- 250-300
- 300-350
- 350-400
- 400-450
- 450-500
- 500-550
- 550-600
- 600 +

Data Sources:
 Dutchess County OCIS - GIS Division
 Dutchess County Department of Planning & Development
 Dutchess County Real Property Tax Service Agency
 Cornell Cooperative Extension Dutchess County
 Cornell University Geospatial Information Repository
 NYS GIS Clearinghouse

1
 Miles





Legend

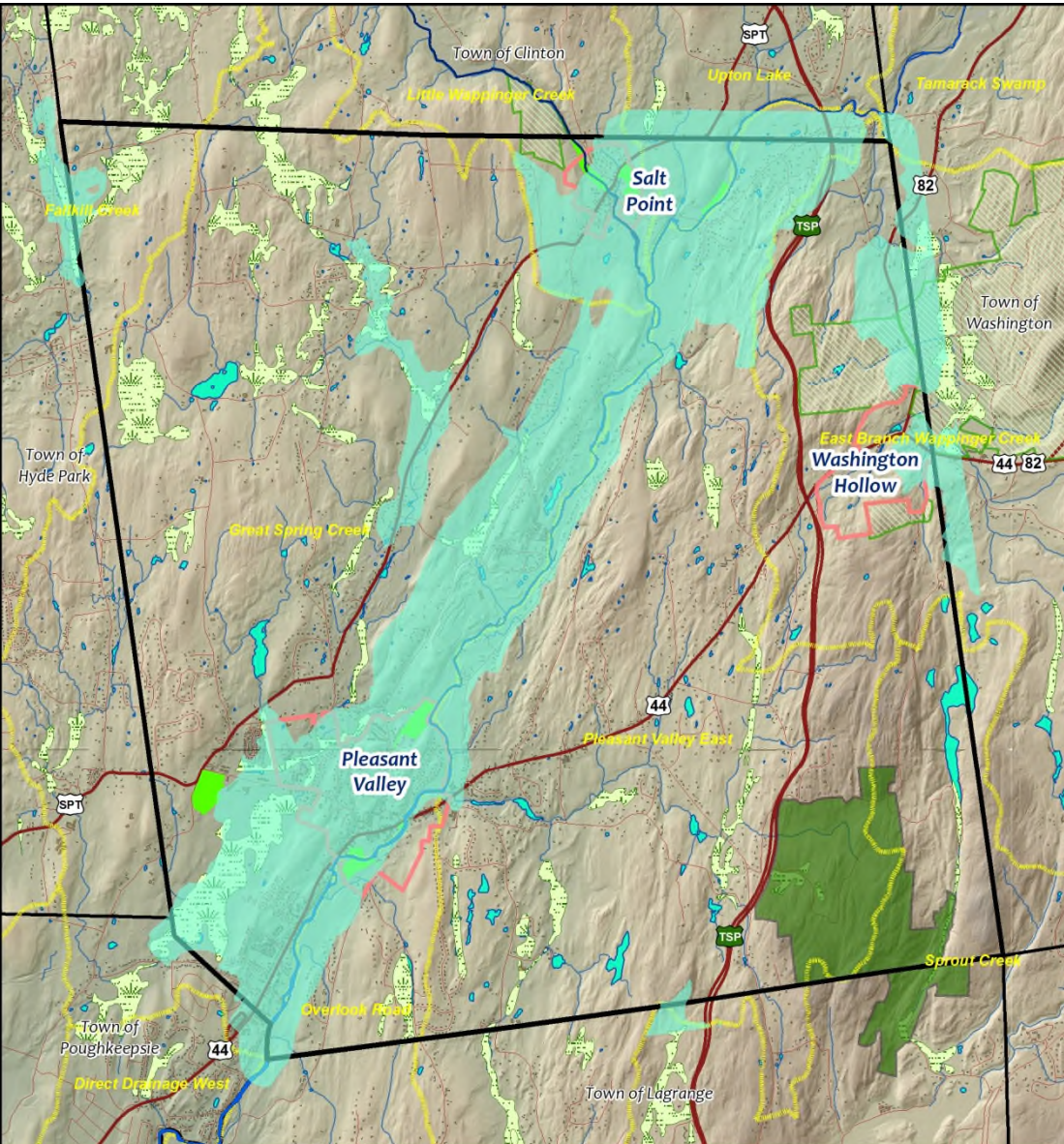
- Pleasant Valley Boundary
- Wappingers Creek
- Little Wappingers Creek
- Hamlets
- Streams
- NYSDEC Wetland
- 100' NYSDEC Wetland Buffer
- Water Body
- Wetland (NWI)
- FEMA Flood Zones (2012)
- Town Owned Land
- Taconic Hereford Multiple Use Area (NYSDEC)
- Lands of Cary Institute of Ecosystem Studies
- Conservation Properties (DLC)
- State Highways
- Roads
- Other Municipal Boundaries



Data Sources:
 Dutchess County OCIS - GIS Division
 Dutchess County Department of Planning & Development
 Dutchess County Real Property Tax Service Agency
 Cornell Cooperative Extension Dutchess County
 Cornell University Geospatial Information Repository
 NYS GIS Clearinghouse
 Cary Institute of Ecosystem Studies

1
 Miles

Aquifer Recharge Areas



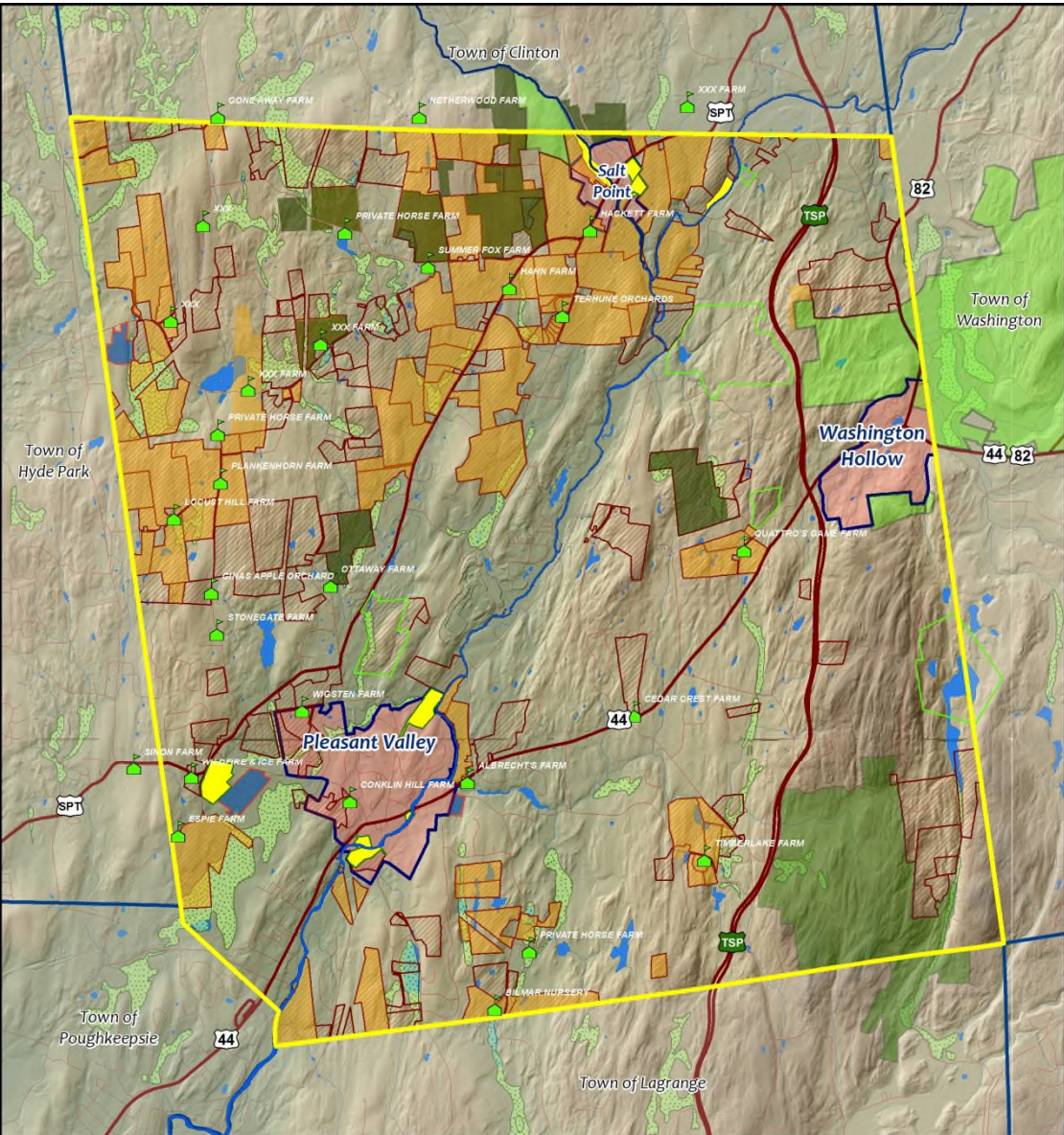
Legend

- Aquifer Recharge Zones
- Watershed Boundary
- Pleasant Valley Boundary
- Hamlet
- Wappingers Creek
- Little Wappingers Creek
- Other Municipal Boundaries
- NYSDEC Wetland
- Water Body
- Streams
- Town Owned Land
- Taconic Hereford Multiple Use Area (NYSDEC)
- Lands of Cary Institute of Ecosystem Studies
- State Highways
- Roads
- Existing Structures

Data Sources:
 Dutchess County OCIS - GIS Division
 Dutchess County Department of Planning & Development
 Dutchess County Real Property Tax Service Agency
 Cornell Cooperative Extension Dutchess County
 Dutchess Land Conservancy
 Cornell University Geospatial Information Repository
 NYS GIS Clearinghouse
 Cary Institute of Ecosystem Studies
 Taconic Site Design & Landscape Architecture

1
Miles





Legend

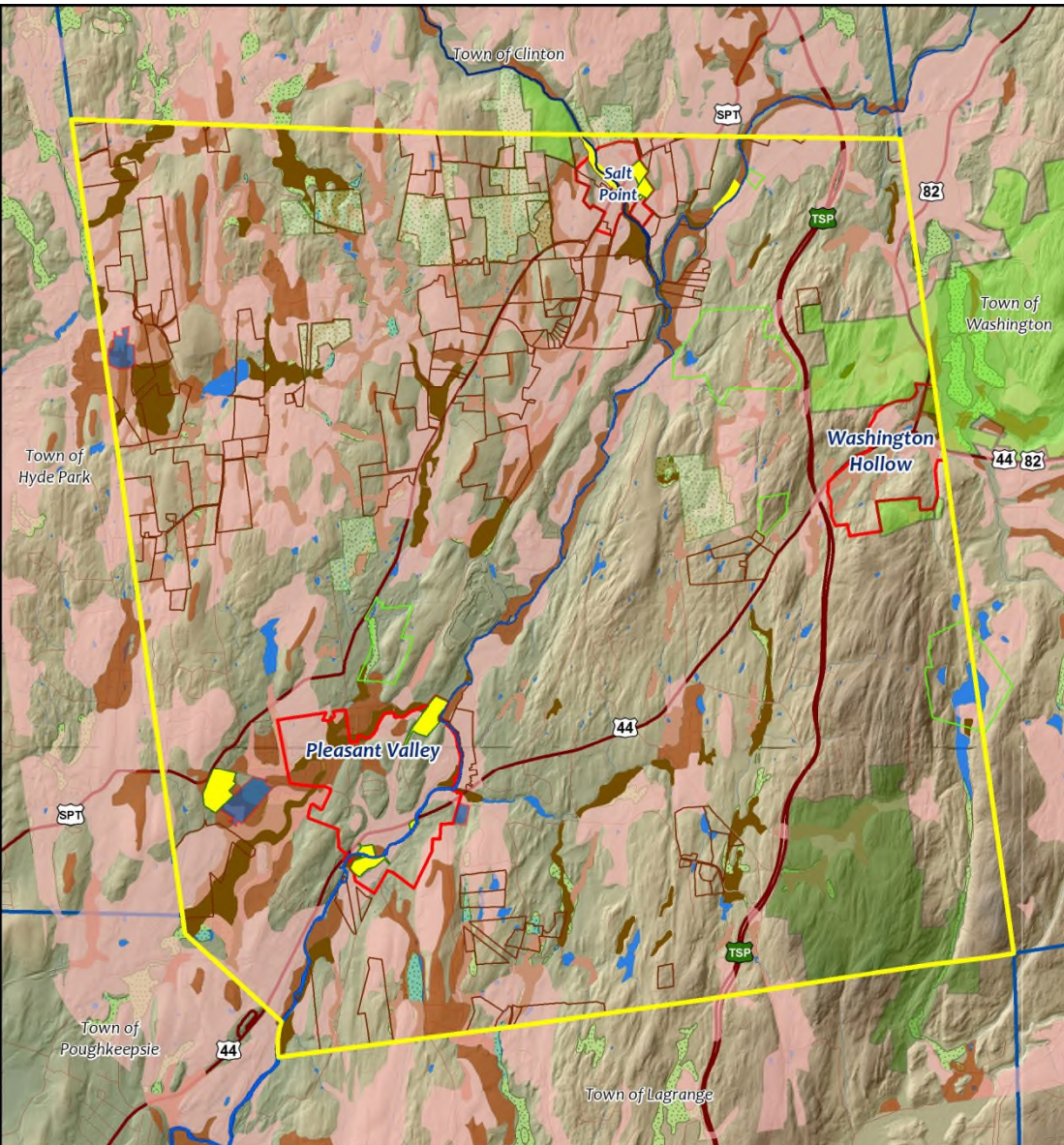
- Active Farms
- Pleasant Valley Boundary
- Wappingers Creek
- Little Wappingers Creek
- Town Parks
- Taconic Hereford Multiple Use Area (NYSDEC)
- Public School
- Other Town Owned Parcels
- Private Recreation Facilities
- Lands of Cary Institute of Ecosystem Studies
- Conservation Properties (DLC)
- Agricultural Exempt Parcels
- Agricultural Districts
- Town Background
- Hamlets
- State Highways
- Roads
- Other Municipal Boundaries
- NYSDEC Wetland
- Water Body
- Streams



Data Sources:
 Dutchess County OCIS - GIS Division
 Dutchess County Department of Planning & Development
 Dutchess County Real Property Tax Service Agency
 Cornell Cooperative Extension Dutchess County
 Cornell University Geospatial Information Repository
 NYS GIS Clearinghouse
 Cary Institute of Ecosystem Studies

1
Miles





Legend

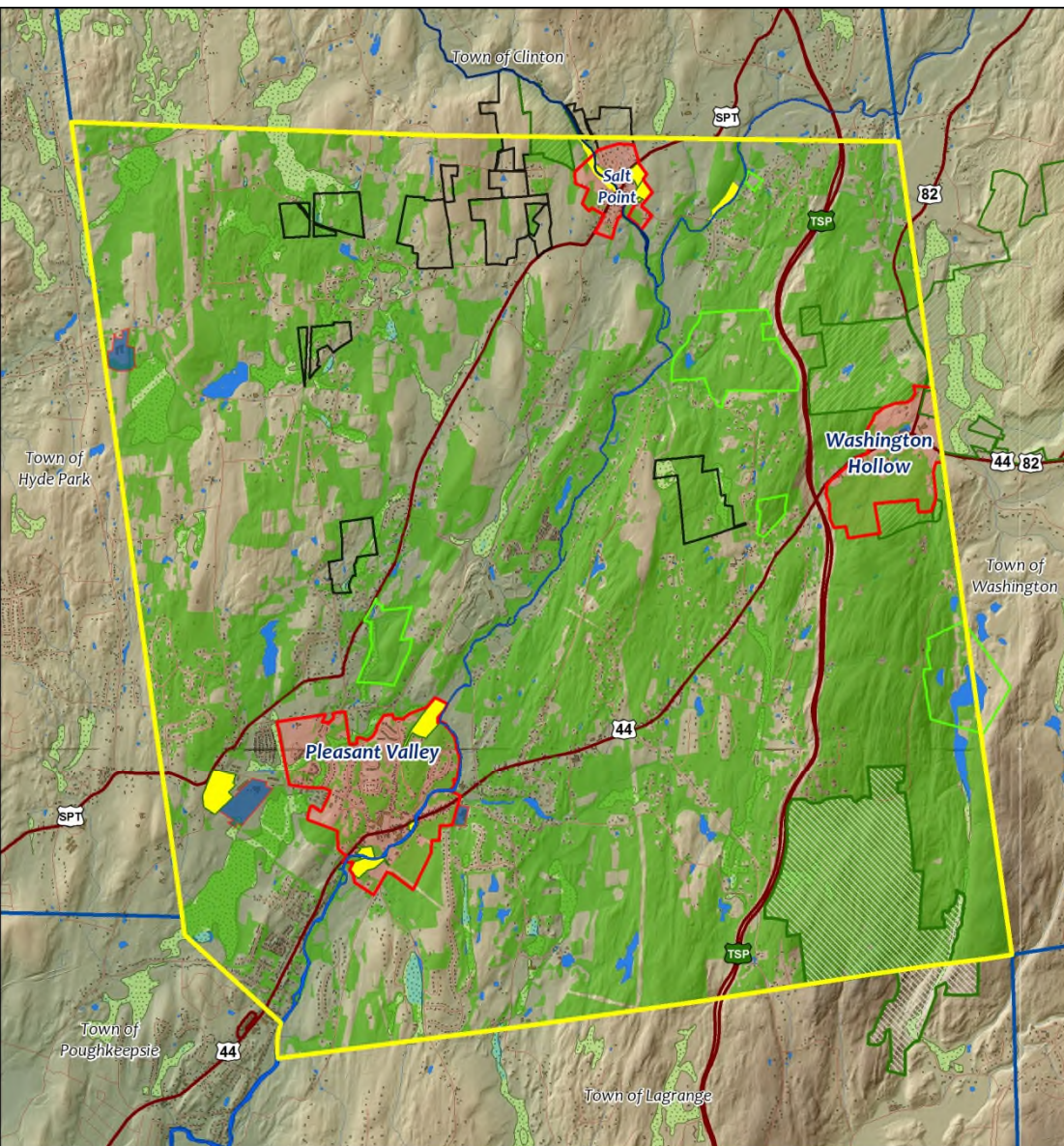
- Pleasant Valley Boundary
- Wappingers Creek
- Little Wappingers Creek
- Town Parks
- Taconic Hereford Multiple Use Area (NYSDEC)
- Public School
- Other Town Owned Parcels
- Private Recreation Facilities
- Lands of Cary Institute of Ecosystem Studies
- Conservation Properties (DLC)
- Agricultural Exempt Parcels
- Hamlets
- Statewide Significant Soils
- Prime Soils
- Hydric soils
- State Highways
- Roads
- Other Municipal Boundaries
- NYSDEC Wetland
- Water Body
- Streams



1
Miles

Data Sources:
 Dutchess County OCIS - GIS Division
 Dutchess County Department of Planning & Development
 Dutchess County Real Property Tax Service Agency
 Cornell Cooperative Extension Dutchess County
 Cornell University Geospatial Information Repository
 NYS GIS Clearinghouse
 Cary Institute of Ecosystem Studies





Legend

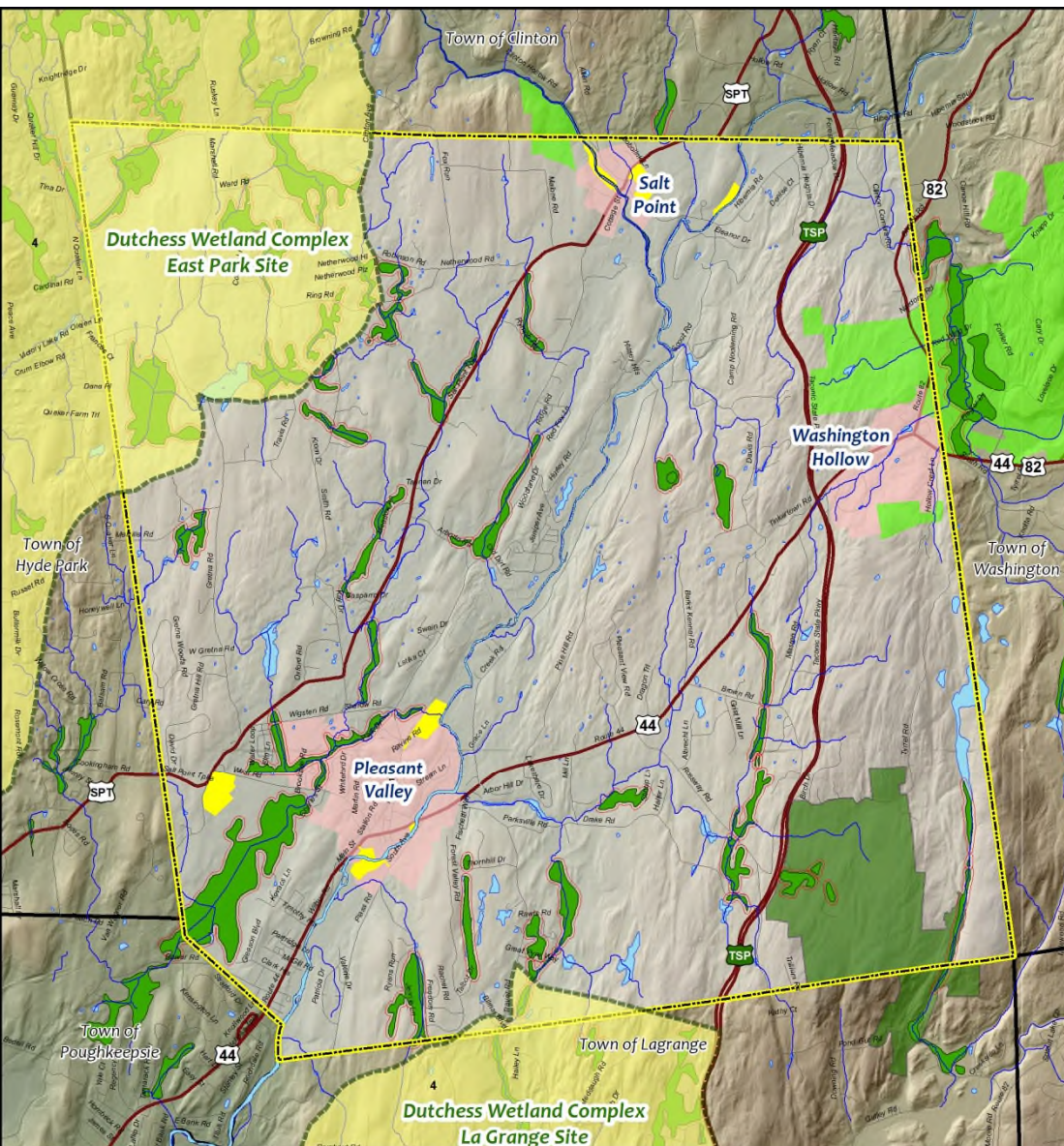
- Pleasant Valley Boundary
- Wappingers Creek
- Little Wappingers Creek
- Hamlets
- Town Parks
- Other Town Owned Parcels
- Taconic Hereford Multiple Use Area (NYSDEC)
- Public School
- Private Recreation Facilities
- Lands of Cary Institute of Ecosystem Studies
- Conservation Properties (DLC)
- Forest
- State Highways
- Roads
- Structures
- Other Municipal Boundaries
- NYSDEC Wetland
- Water Body
- Streams



Data Sources:
 Dutchess County OCIS - GIS Division
 Dutchess County Department of Planning & Development
 Dutchess County Real Property Tax Service Agency
 Cornell Cooperative Extension Dutchess County
 Cornell University Geospatial Information Repository
 NYS GIS Clearinghouse
 Cary Institute of Ecosystem Studies

1
Miles





Legend

- NYSDEC Significant Natural Communities
- Pleasant Valley Boundary
- Wappingers Creek
- Little Wappingers Creek
- Streams
- NYSDEC Wetland
- 100' NYSDEC Wetland Buffer
- Water Body
- Hamlet
- Town Owned Land
- Taconic Hereford Multiple Use Area (NYSDEC)
- Lands of Cary Institute of Ecosystem Studies
- State Highways
- Roads
- Other Municipal Boundaries

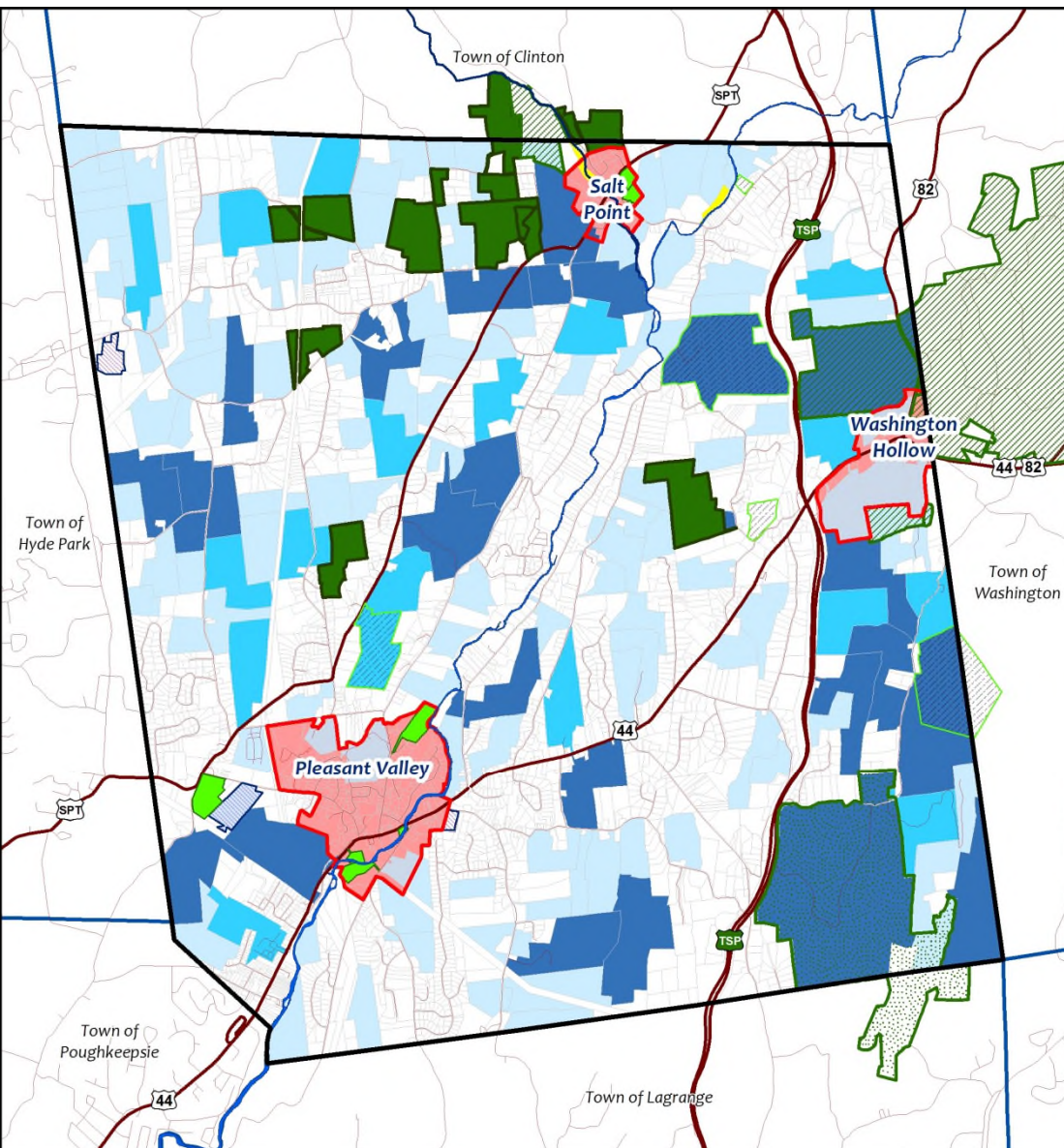


Data Sources:
 Dutchess County OCIS - GIS Division
 Dutchess County Department of Planning & Development
 Dutchess County Real Property Tax Service Agency
 Cornell Cooperative Extension Dutchess County
 Cornell University Geospatial Information Repository
 NYS GIS Clearinghouse
 Cary Institute of Ecosystem Studies
 NYSDEC Natural Heritage Program

1
 Miles



Parcel Size Distribution



Legend

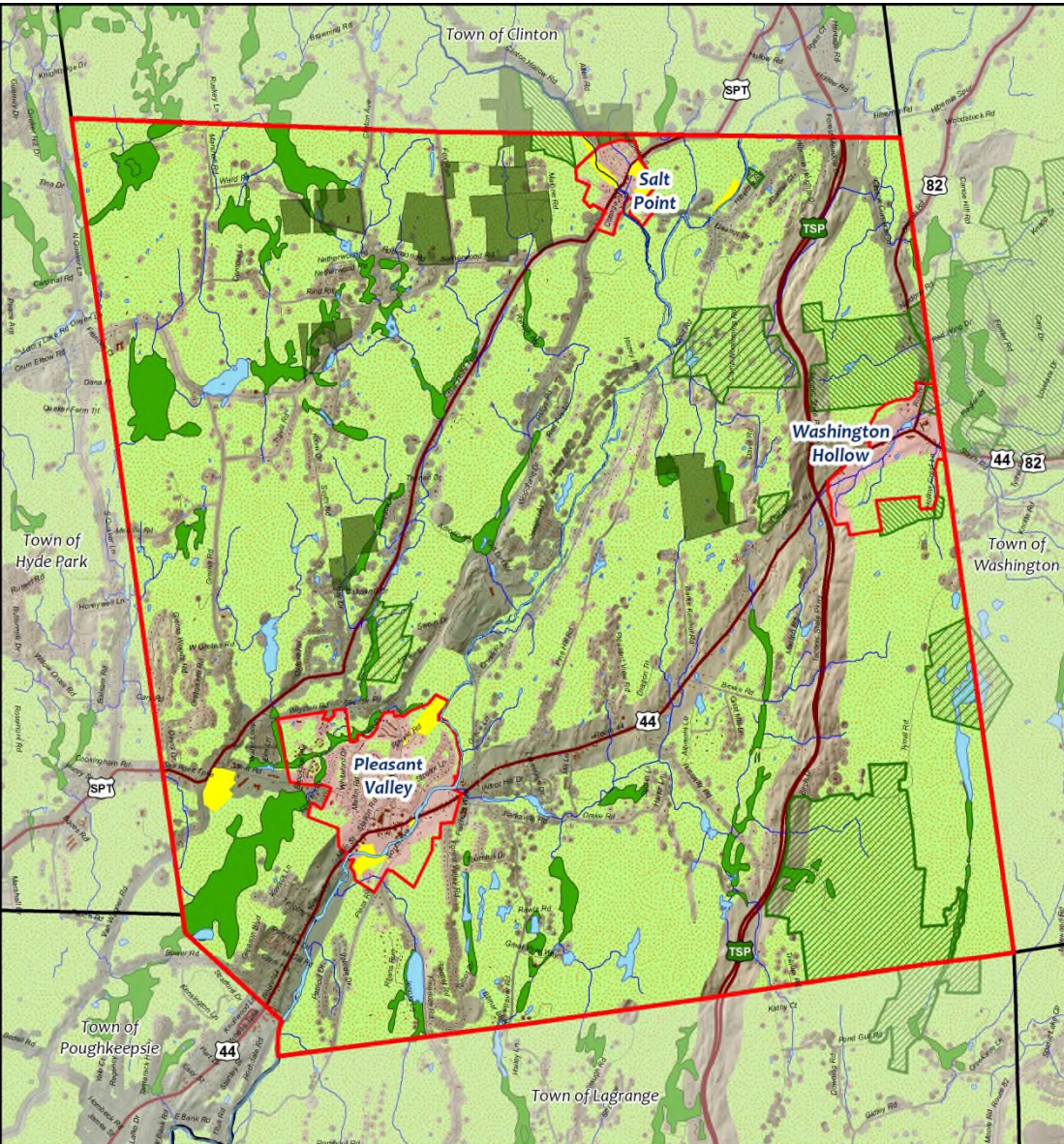
- Parcels less than 50 Acres
- Parcels 50 to 75 Acres
- Parcels 100 Acres and larger
- Pleasant Valley Boundary
- Wappingers Creek
- Little Wappingers Creek
- Hamlets
- Town Parks
- Taconic Hereford Multiple Use Area (NYSDEC)
- Public School
- Other Town Owned Parcels
- Private Recreation Facilities
- Lands of Cary Institute of Ecosystem Studies
- Conservation Properties (DLC)
- State Highways
- Road Centerline
- Other Municipal Boundaries
- Hamlet Background



Data Sources:
 Dutchess County OCIS - GIS Division
 Dutchess County Department of Planning & Development
 Dutchess County Real Property Tax Service Agency
 Cornell Cooperative Extension Dutchess County
 Cornell University Geospatial Information Repository
 NYS GIS Clearinghouse

1
 Miles





Legend

- ContiguousHabitat
- Pleasant Valley Boundary
- Hamlet
- Wappingers Creek
- Little Wappingers Creek
- Water Body
- NYSDEC Wetland
- Streams
- Town Owned Land
- Taconic Hereford Multiple Use Area (NYSDEC)
- Conservation Properties (DLC)
- Private Recreation Facilities
- Lands of Cary Institute of Ecosystem Studies
- State Highways
- Roads
- Existing Structures
- Other Municipal Boundaries

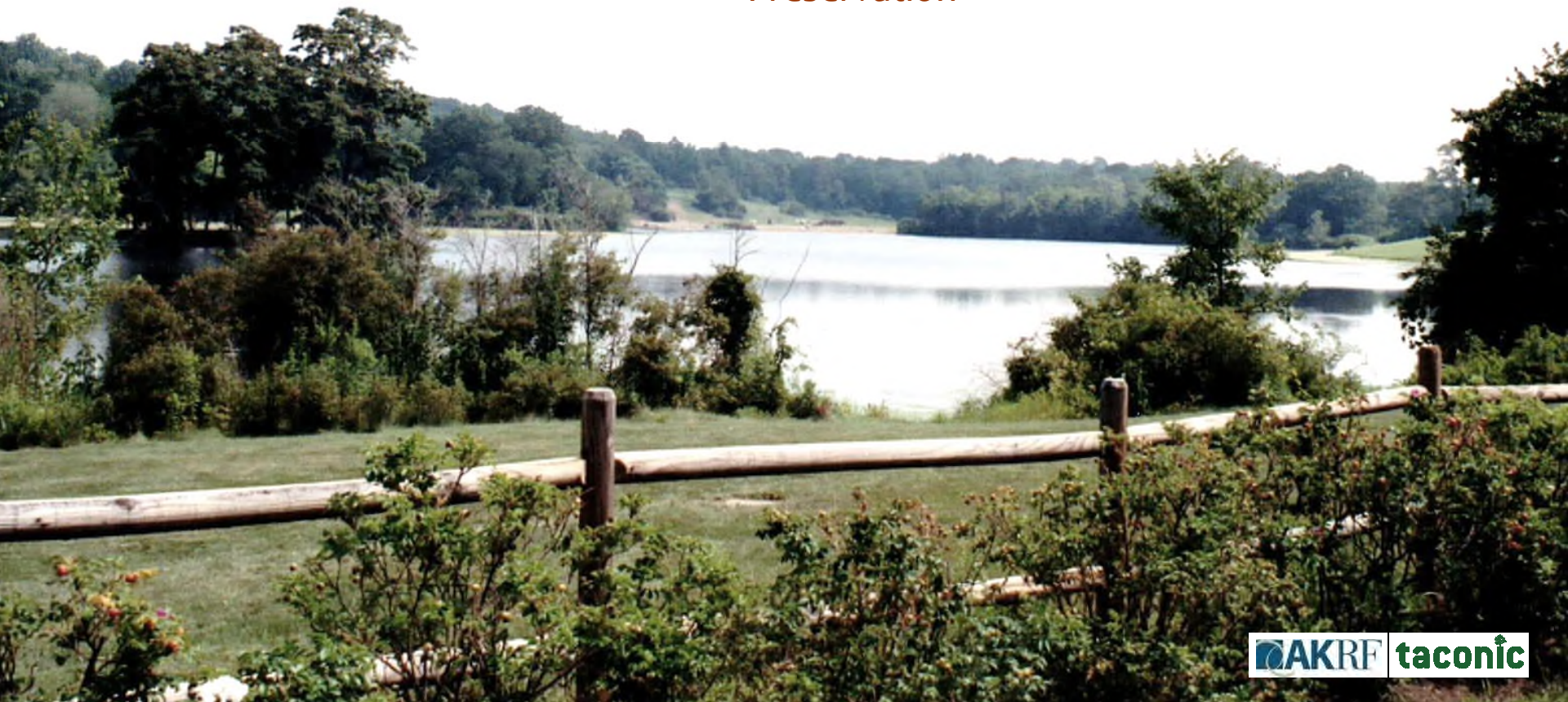
Data Sources:
 Dutchess County OCIS - GIS Division
 Dutchess County Department of Planning & Development
 Dutchess County Real Property Tax Service Agency
 Cornell Cooperative Extension Dutchess County
 Cornell University Geospatial Information Repository
 NYS GIS Clearinghouse
 Cary Institute of Ecosystem Studies
 NYSDEC Natural Heritage Program

1
 Miles



REPORTING BACK

- ISSUE #1 Identify Primary Challenges to Natural Resource Protection and Agricultural Viability
- ISSUE #2 Develop Recommendations to Address these Challenges - Focus on topics that can be controlled through recommendations and actions in the PLAN
- ISSUE #3 Establish Criteria for Priority Open Space/Farmland Preservation



NEXT STEPS

- On-line survey
<https://www.surveymonkey.com/s/OpenSpaceandFarmlandSurvey>
- Revisions to resource mapping
- Develop Draft Open Space and Farmland Plan
- Conduct Community Engagement Meeting (June 2013)

